

## **Accessibility Statement : Bramley**

### **Driveway**

Offers parking for two guest vehicles or motorcycles.

### **Parking to entrance**

Approximately 4-8 metres depending upon parking position. Driveway is of pea gravel construction.

Entrance to Bramley is up two steps. All doorways in Bramley are 74cm wide.

### **Ground floor**

The open plan kitchen and dining area, living room and hallway are on one level with slate flooring with a rug in the living room.

Two steps take guests to rear garden from the kitchen/dining area which is level ground with pea gravel path to the decked area/walkway. The walkway slopes in a downward decline to the floor of the woodland.

Staircase of 6 stairs, half landing and a further 7 stairs to first floor.

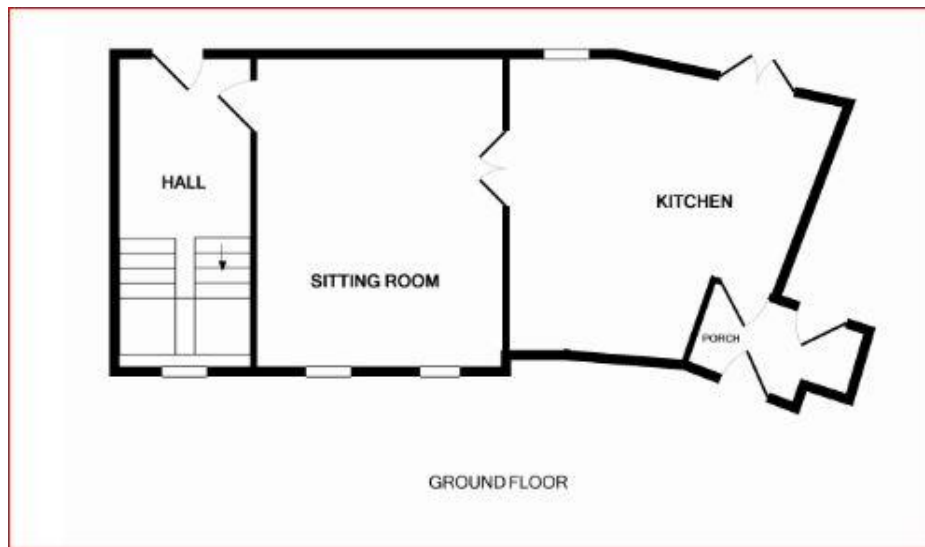
### **First floor**

Carpeted bedroom with bedside rugs. Both the en-suite and additional bathroom have travertine flooring. Bath rugs are provided.

### **Lighting**

Bramley is well lit inside with ceiling spotlights and a number of table lamps. Externally, lights are fitted to the walls to the front and rear of the accommodation.

## Floor Plan : Bramley



Unfortunately, our premises are not suitable for wheelchair users as the bedrooms are located on the first floor and we do not have lift access to that level.

We do not accept pets, however, if you wish to bring an assistance dog, please contact us to discuss your requirements.

Please feel free to contact us to discuss any requests or requirements that we may be able to assist you with for a stay in Bramley.

## Accessibility Statement : Pippin

### Driveway

Offers parking for two guest vehicles or motorcycles.

### Parking to Entrance

Approximately 4-8 metres depending upon parking position. Driveway is of pea gravel construction.

Entrance to Pippin is up two steps. All doorways in Pippin are 74cm wide.

### Ground Floor

The open plan kitchen, dining and living area are on one level with slate flooring with a rug in the living area.

Two steps take guests to rear garden from the kitchen/dining area which is level ground with pea gravel path to the decked area/walkway. The walkway slopes in a downward decline to the floor of the woodland.

Staircase of 2 steps to a half landing and a further 11 steps to first floor.

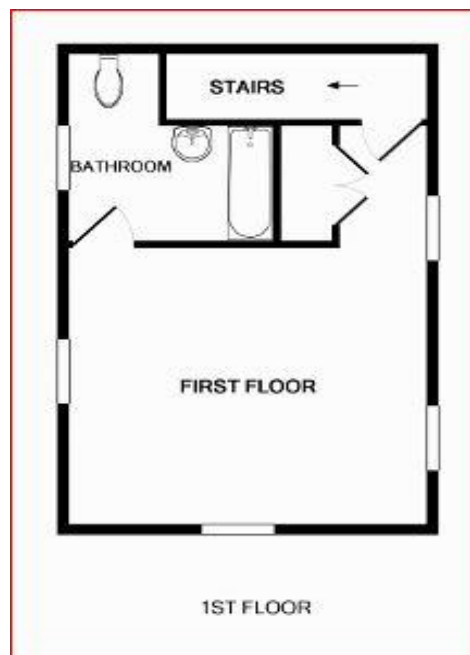
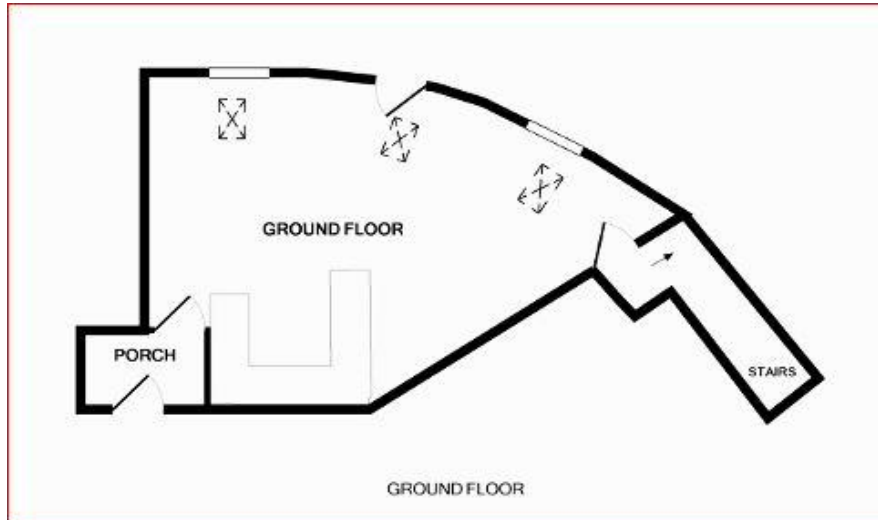
### First Floor

Carpeted bedroom with bedside rugs. En-suite has travertine flooring. Bath rugs are provided.

### Lighting

Pippin is well lit inside with ceiling spotlights and a number of table lamps. Externally, lights are fitted to the walls to the front and rear of the accommodation.

## Floor Plan : Pippin



Unfortunately, our premises are not suitable for wheelchair users as the bedrooms are located on the first floor and we do not have lift access to that level.

We do not accept pets, however, if you wish to bring an assistance dog, please contact us to discuss your requirements.

Please feel free to contact us to discuss any requests or requirements that we may be able to assist you with for a stay in Pippin.